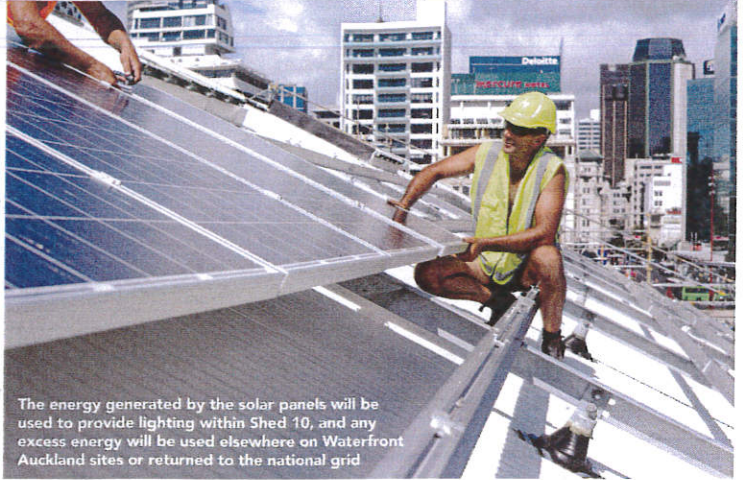


The solar panel array on top of Shed 10 is the largest grid-connected roof-mounted multi-crystalline PV system in the country



The energy generated by the solar panels will be used to provide lighting within Shed 10, and any excess energy will be used elsewhere on Waterfront Auckland sites or returned to the national grid

Shed 10 on Auckland's waterfront goes solar

The importance of solar energy to Auckland's future has been recognised with the installation of the largest solar panel system of its kind in the country.

The 60 kW system has been attached to the roof of Shed 10, the 100-year-old historic cargo shed on Queens Wharf which is being refurbished for use as an events space and as Auckland's primary cruise ship terminal.

Consisting of 240 photovoltaic (PV) panels, each measuring 165 x 99 cm, and covering an area of 400 sq m, supplier Vector says it is the largest grid-connected roof-mounted multi-crystalline PV system in the country.

The amount of renewable energy generated by the Shed 10 PV system is estimated to be 84,000 kWh per year – equivalent to the average annual energy use of 10 households. The energy generated will be used to provide lighting in the building, and any excess energy will be used elsewhere on Waterfront Auckland sites or will go back into the national electricity grid. The amount of energy produced over the life of the Shed 10 system is expected to save the atmosphere hundreds of tonnes of carbon dioxide that the national power grid will not need to produce.

SHOWCASING THE BEST

Mayor Len Brown applauds the forward-thinking and innovative move by Waterfront Auckland, supported by Vector, to include solar energy as part of the refurbishment, and says Shed 10 is a demonstration of high-tech innovation. "Aucklanders currently spend \$5 billion each year on electricity and this is likely to double by 2031, so it's essential we start looking to sustainable energy resource solutions to ensure our future vision for the city becomes a reality," he says.

"Renewable energy will increasingly have a part to play in this. With Shed 10, as a high-profile public building in the heart of the city, we have an opportunity to showcase the best of what solar power has to offer, and it's only right that Auckland Council through

Waterfront Auckland shows leadership in this area."

Vector's chief executive Simon MacKenzie says the organisation is proud to be involved in such an important public project. "These kinds of renewable energy initiatives support the council's vision for Auckland to be the world's most liveable city. Of course, the right infrastructure elements have to be in place to support and enhance these solutions, which is what Vector has been working on for well over a decade. We are constantly looking at new, leading-edge solutions to ensure we are running the network as efficiently as we can, as well as providing options for customers to take control of their power supply."

CHALLENGING BUILD

Waterfront Auckland CEO John Dalzell says the refurbishment of Shed 10 is a major project for the council-controlled organisation, and has not been without its challenges. Work stopped temporarily when original contractor Mainzeal was placed in receivership in February, but Macrennie Construction is now onboard and the

project should be completed on time and on budget.

He says the PV system on Shed 10 is just one of a number of green initiatives that are part of the building's refurbishment, which also include the optimisation of natural light and ventilation, and the Shed 10 initiative is just "the tip of the iceberg" in terms of the potential to incorporate sustainability in the design of buildings on a redeveloped waterfront.

"One of our primary goals is to create a waterfront that is resilient to change, and in Wynyard Quarter we are already modelling how we can showcase the benefits of renewable energies and green building techniques," Mr Dalzell says.

Auckland was recently named the Best Turnaround Destination by the world's leading cruise line executives, capping off a record cruise season. Mayor Brown says the award reinforces Auckland's growing international status as a renowned cruise destination.

"It is outstanding for Auckland to be recognised by the industry's top decision-makers as the number one place to start or end a cruise. This recognition puts us in good stead to grow our number of turnaround cruises and consequently have passengers stay here for longer and help generate more value for Auckland's visitor economy," he says.

The refurbishment of Shed 10 is expected to be completed in June this year, with a public open day scheduled for shortly after.

Port begins installation of new gangway at Shed 10

With Waterfront Auckland's refurbishment of Shed 10 on Queens Wharf nearing completion, Ports of Auckland is beginning to install a new covered gangway that will service cruise ships that call at Shed 10.

The multi-million-dollar gangway is a specialist piece of equipment similar to an airport airbridge. It will automatically move up and down as the ship moves with the tide and will allow the rapid transfer of passengers between the ship and Shed 10.

Ports of Auckland general manager infrastructure and property, Alistair Kirk, says the gangway will be delivered to Queens Wharf in a number of large segments, and will then be erected onsite and commissioned over the next couple of months. Service Engineers, a North Shore-based company, has been contracted to build the new covered gangway. "It is fantastic that we have been able to have the gangway made locally," Mr Kirk adds.